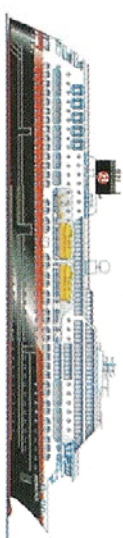


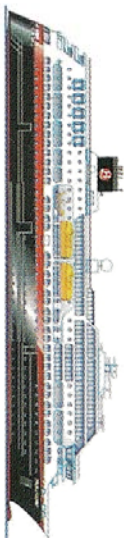
MS FRAM (FR)
 TONNASJE: 12.700
 BYGGEÅR: 2007

PASSASJERER: 500
 LUGARER: 95
 SUITER: 39
 BILPLASSER: 25



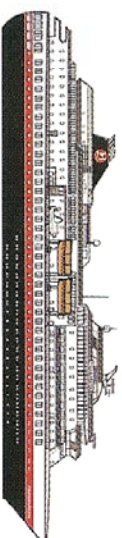
MS MIDNATTSOL (MS)
 TONNASJE: 16.151
 BYGGEÅR: 2003

PASSASJERER: 1000
 LUGARER: 279
 SUITER: 21
 BILPLASSER: 45



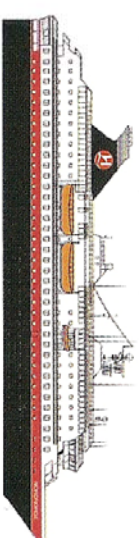
MS TROLLFJORD (TF)
 TONNASJE: 16.140
 BYGGEÅR: 2002

PASSASJERER: 822
 LUGARER: 279
 SUITER: 21
 BILPLASSER: 45



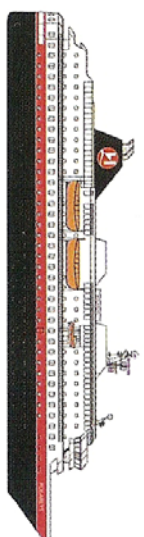
MS FINNMARKEN (FM)
 TONNASJE: 15.530
 BYGGEÅR: 2002

PASSASJERER: 1000
 LUGARER: 254
 SUITER: 26
 BILPLASSER: 47



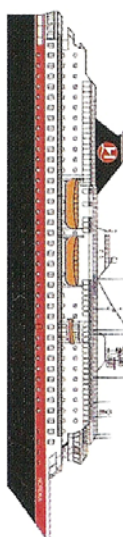
MS NORDNORGE (NN)
 TONNASJE: 11.350
 BYGGEÅR: 1997

PASSASJERER: 691
 LUGARER: 199
 SUITER: 12
 BILPLASSER: 45



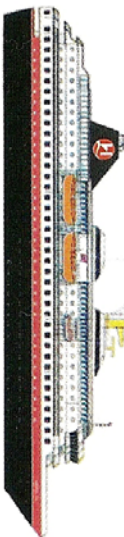
MS POLARLYS (PL)
 TONNASJE: 11.204
 BYGGEÅR: 1996

PASSASJERER: 737
 LUGARER: 216
 SUITER: 6
 BILPLASSER: 45



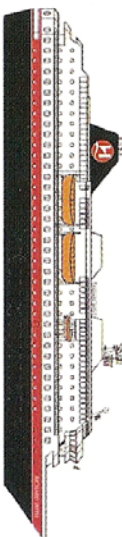
MS NORDKAPP (NK)
 TONNASJE: 11.386
 BYGGEÅR: 1996

PASSASJERER: 691
 LUGARER: 205
 SUITER: 10
 BILPLASSER: 45



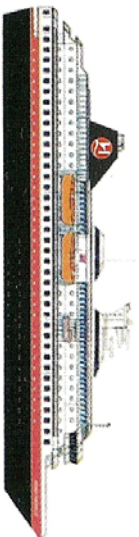
MS NORDLYS (NL)
 TONNASJE: 11.204
 BYGGEÅR: 1994

PASSASJERER: 691
 LUGARER: 217
 SUITER: 6
 BILPLASSER: 45



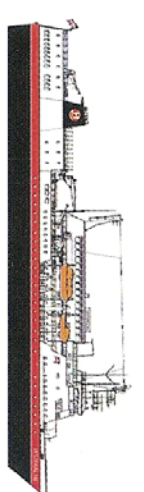
MS RICHARD WITH (RW)
 TONNASJE: 11.200
 BYGGEÅR: 1993

PASSASJERER: 691
 LUGARER: 206
 SUITER: 10
 BILPLASSER: 45



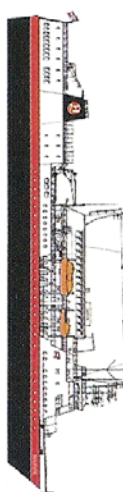
MS KONG HARALD (KH)
 TONNASJE: 11.204
 BYGGEÅR: 1993

PASSASJERER: 691
 LUGARER: 225
 SUITER: 2
 BILPLASSER: 45



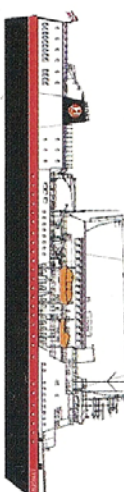
MS VESTERÅLEN (VA)
 TONNASJE: 6.257
 BYGGEÅR: 1983/95

PASSASJERER: 560
 LUGARER: 146
 BILPLASSER: 35



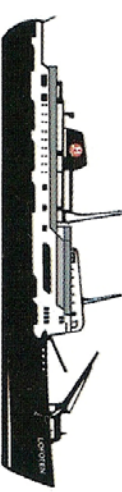
MS NARVIK (NA)
 TONNASJE: 6.257
 BYGGEÅR: 1982/95

PASSASJERER: 500
 LUGARER: 148
 BILPLASSER: 35



MS LYNGEN (LY)
 TONNASJE: 6.257
 BYGGEÅR: 1982/89

PASSASJERER: 500
 LUGARER: 146
 SUITER: 1
 BILPLASSER: 40



MS LOFOTEN (LO)
 TONNASJE: 2.661
 BYGGEÅR: 1964/03

PASSASJERER: 410
 LUGARER: 90
 BILPLASSER: 0



MS NORDSTJERNEN (NX)
 TONNASJE: 2.568
 BYGGEÅR: 1956/00

PASSASJERER: 400
 LUGARER: 75
 BILPLASSER: 0